

From SLO MODEL to PRACTICE: Pitfalls and drivers for a transparent dialogue

Alberto Vázquez Ruiz



Did you upload your presentation, document to the NEMO Box folder? *

Yes



Page 2 of 2

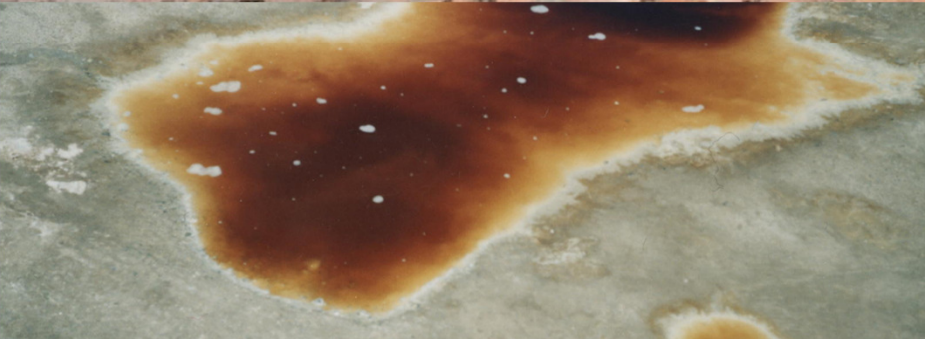
Back

Submit



- Belgian organization based in Ghent
- Since 2005, formed mainly by volunteers
- Working with communities affected by mining
- Specially focussed on Latin America





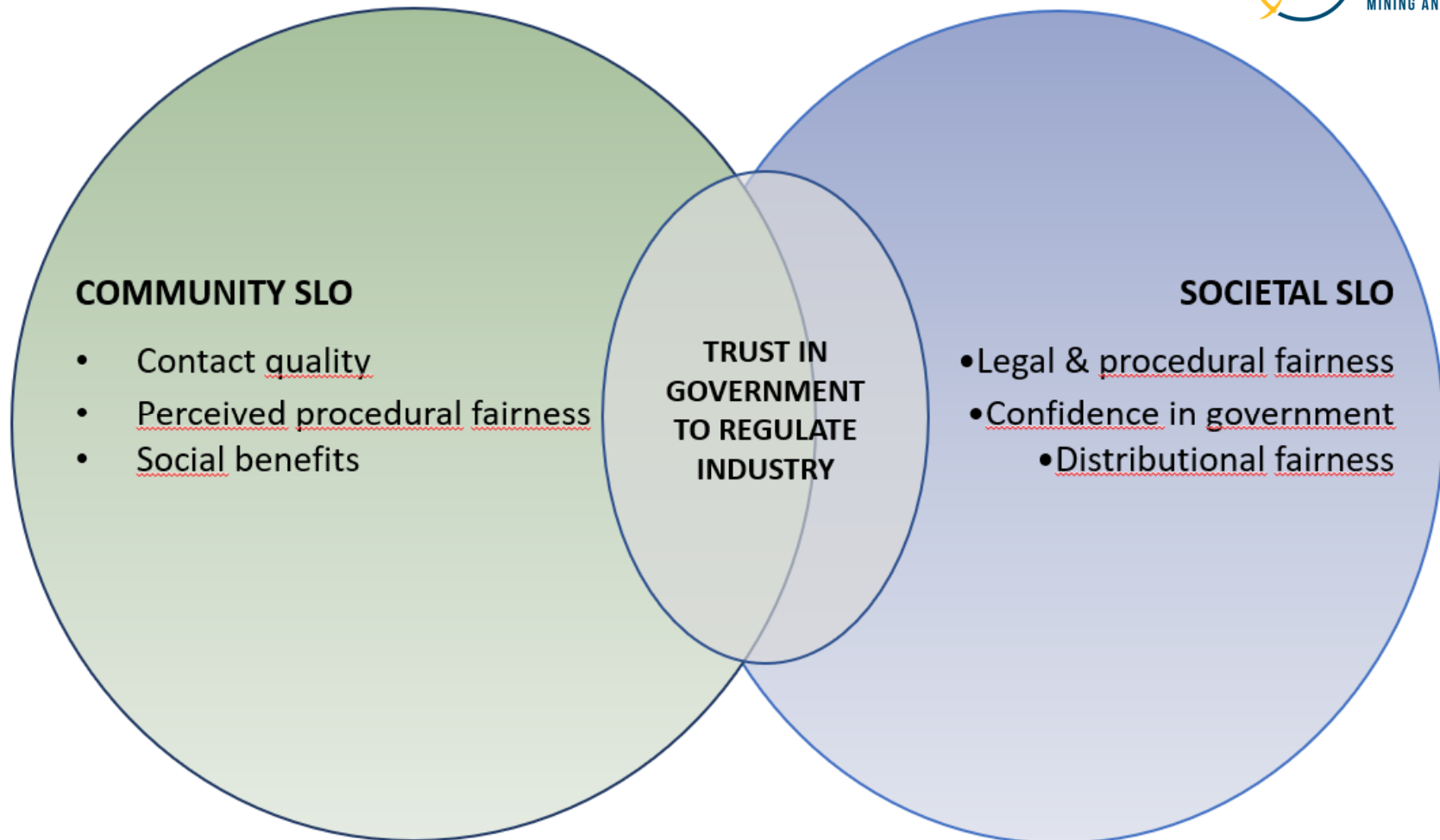


Social License to Operate & Public Acceptance

**The industry needs the resources
from the territory of a local
community**

**...more than the local
community needs the industry.**

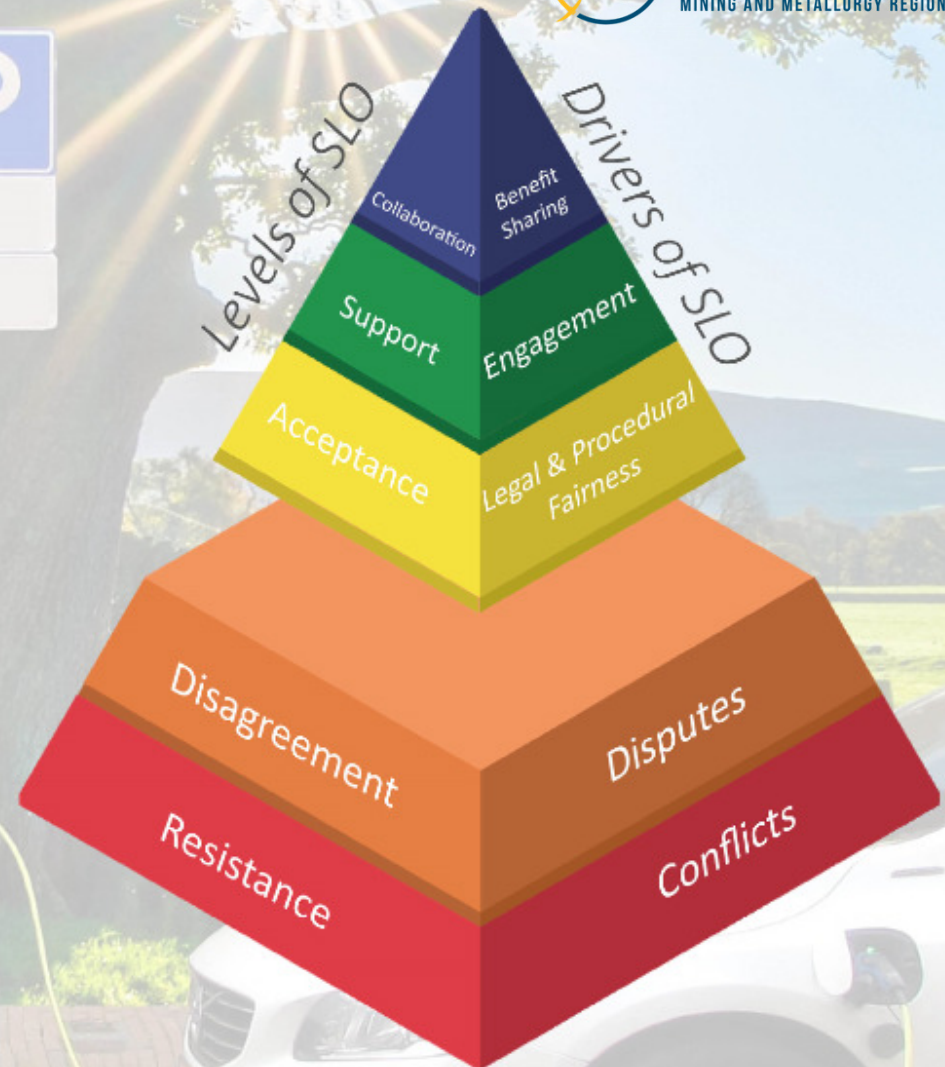
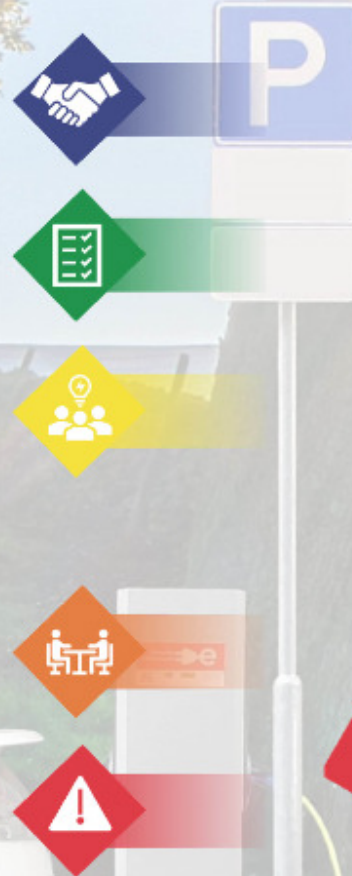
DRIVERS OF TRUST & ACCEPTANCE



Adapted from Moffat and Zhang's model in Resources Policy 2014 and Mariana Lyra's 'Trust & Influence' Diagram

SLO In Europe

- SLO is both process and outcome
- SLO is context specific but based on common European values
- SLO is both present-day practices and future ideals
- SLO operates simultaneously on the community and societal levels
- SLO requires a social purpose
- SLO is based on communities believing a project confers an actual benefit.



BENEFIT SHARING

<p>Relationship Type: Collaborative</p> <ul style="list-style-type: none"> • Citizen participation in revision of mining laws and ensuring consistency between policy/regulation • Promoting renewables and more efficient uses of energy through mining laws (rehab programs, etc.) • Citizen input on national level distribution of mining taxes & royalties • National level education programs to promote raw materials awareness 	<p>Relationship Type: Collaborative</p> <ul style="list-style-type: none"> • Co-planning of project, ongoing cooperation, partnership in 'decision-finding' process • Enhanced well-being (cohesiveness, stability) and livelihoods of communities (local procurement/salaries) realized through agreements • Generating additional income for community/local government • Passive joint monitoring (shows confident engagement) • Training programs for the new skills needed in the mining workforce
---	---

ENGAGEMENT

<p>Relationship Type: Transactional</p> <ul style="list-style-type: none"> • Govt/industry raw materials awareness campaigns • Citizens believe can influence regulation of industry • National/regional government seek stakeholder input and adopt voluntary mining standards • Establishment of and participation in mining-related networks 	<p>Relationship Type: Transactional</p> <ul style="list-style-type: none"> • Community feels contact quality with company is high • Community believes they have a voice in the environmental/permitting processes and can influence economic/social outcomes of project • Active joint monitoring (indicates skeptical tolerance or passion independent of project)
--	--

LEGAL & PROCEDURAL FAIRNESS

<p>Relationship Type: Transactional</p> <ul style="list-style-type: none"> • Government has legitimacy • Public trust in environmental/permitting/licensing processes, which are seen to have adequate public consultation opportunities • UNDRIP mandates incorporated into national mining legislation • Government is accountable to public and will support regulations over politics • Minimum level of economic compensation to country 	<p>Relationship Type: Transactional</p> <ul style="list-style-type: none"> • Company behavior toward the community is fair, transparent, respectful and observes legal/regulatory processes • Company informs the public as required and conducts requisite consultations • Community believes the burden of impacts is outweighed by the project's benefits • Jobs in the community and revenue for the municipality will be created
---	--



DISPUTES

<p>Relationship Type: Withholding or withdrawal of SLO (mining possible)</p> <ul style="list-style-type: none"> • Environmental/social/human rights incidents lead to loss in legitimacy of government • No confidence that government can or will regulate the mining industry • Type of commodity (coal, uranium, etc.) • Lack of awareness and education about raw materials and their everyday uses • Poor industry behavior at local level in a particular country • Foreign ownership/perception that mining revenue does not benefit the country 	<p>Relationship Type: Withholding or withdrawal of SLO (mining possible)</p> <ul style="list-style-type: none"> • Poor company engagement (from non-contact to overriding community wishes) and no (functioning) grievance mechanism • Disregarding most marginalized groups or those with little visibility • Fear of air/water pollution and inadequate/too technologically complex mitigation • Commodity and type of mine development • Land use conflicts, threat to livelihoods and no-go zones (nature conservation, indigenous peoples' lands, cultural heritage)
--	---

CONFLICTS

<p>Relationship Type: No mining possible</p> <ul style="list-style-type: none"> • Belief that human rights are violated • Government is not seen as being the rightful representative of the people • Disastrous historic mining incidents 	<p>Relationship Type: No mining possible</p> <ul style="list-style-type: none"> • Important individual and community values are disregarded by government and company • Community has historically been lied to and there is deep distrust • Severe historic mining incidents
--	---

Adapted from Thomson and Boutillier's SLO Model



Free choice?

RESISTANCE

Relationship Type: No mining possible

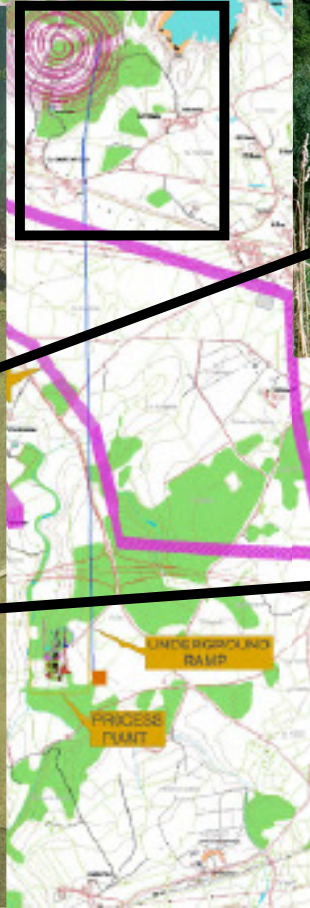
- Belief that human rights are violated
- Government is not seen as being the rightful representative of the people
- Disastrous historic mining incidents

CONFLICTS

Relationship Type: No mining possible

- Important individual and community values are disregarded by government and company
- Community has historically been lied to and there is deep distrust
- Severe historic mining incidents

Yes





Does mining in the EU have no impact?

- Environmental
- Cultural



Does mining in the EU

- Environmental
- Cultural
- Economic

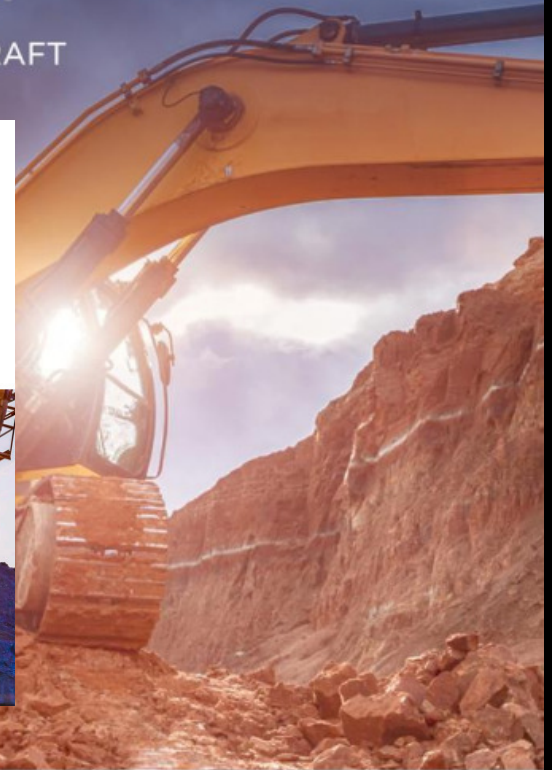
IGF-OECD PROGRAM TO ADDRESS BEPS IN MINING

THE HIDDEN COST OF TAX INCENTIVES IN MINING

CONSULTATION DRAFT

IGF-OECD PROGRAM TO ADDRESS BEPS IN MINING

LIMITING THE IMPACT OF EXCESSIVE INTEREST DEDUCTIONS ON MINING REVENUE



IGF

INTERGOVERNMENTAL FORUM
on Mining, Minerals, Metals and
Sustainable Development



OECD
BETTER POLICIES FOR BETTER LIVES





Does mining in the EU have no impact?

- Environmental
- Cultural
- Economic
- **Social**





Does m

El Principado de Asturias rechaza el proyecto de la mina de oro de Salave

- Prima los informes desfavorables de la Confederación Hidrográfica del Cantábrico frente a los del Instituto Geológico y Minero que no veía problema para los acuíferos

• Environmental

• Cultural

• Economic

• Social

• Political



Publicidad

Cartel a favor de la mina de oro de Salave - luis sevilla



alejandro carra



Actualizado: 21/12/2014 03:13h



GUARDAR

LO MÁS LEÍDO EN ABC

Sociedad

ABC

1 Dos catedráticos de Odontología lideran una trama de tesis plagiadas en las universidades de Murcia y Granada





Open dialogue
based on equality
to **discuss** with all stakeholders
impacts identified, prevented & tackled
prior to any possible agreement.



Policy recommendation:

A regulated **multi-stakeholder platform** with **binding decision-making** for the **co-management** of the mining operation...

...with **guarantees and options** at any stage for the rejection of the project.

(Respect any process of **free consultation** prior and during the operation)



Contact

CATAPA vzw

www.catapa.be

alberto.vazquez@catapa.be